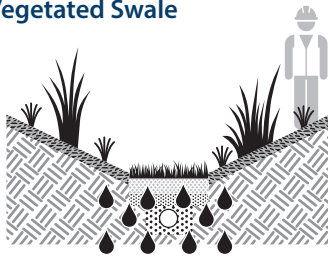


Stormwater Quality Maintenance Checklist

Post Construction Stormwater Best Management Practice (BMP) Maintenance

Vegetated Swale Maintenance

Vegetated Swale



Vegetated swales are earthen channels with vegetation on their slopes and bottom. Pollutants and sediments are captured by biological filtration. While directing stormwater during rain events, they also reduce the quantity of runoff by providing infiltration to the underlying soil. They are usually designed to greatly reduce the need for curbs, gutters, inlets, and piping. Regular maintenance is necessary to ensure meeting the swale's specific water quality performance designed for each site. Vegetated swales are the stormwater BMP most susceptible to failure due to lack of ongoing maintenance.

Facility

Facility Name _____

Address _____

This Stormwater Quality (SWQ) Maintenance Checklist can be used as an alternate inspection document for renewing the annual SWQ Maintenance Permit (instead of a proprietary report from a maintenance service) and is to be completed, signed, and submitted to the City of Roseville for each permitted BMP on the facility site.

General

- Remove litter and loose debris including the swale's slopes, inlet/outlet areas and channel bottom
- Inspect for and note any standing water pools which provide mosquito-breeding habitat
(any ponded flows should drain within 72 hours after rain event)
- Inspect for and note any obstructions impeding stormwater flow through the swale
- Inspect for and note any channelization problem areas in swale,
- Photograph each BMP to show current condition and submit with SWQ renewal documents

Erosion and Sedimentation

- Remove any debris buildup near inlet/outlet areas and culverts wherever flow is impeded
- Remove excessive sedimentation in bottom of channel.
- Correct channelization problem areas in the swale by adding suitable soil and vegetation
- Repair ruts or holes in the swale by adding suitable soil and vegetation

Vegetation

- Remove weeds, unwanted vegetation, or invasive plants
- Trim / remove diseased, dead and/or excessive vegetation, and replant as needed
- Mow grass only after removing any trash to maintain optimal height
(mow tall 6" grass to 3" minimum / mow short grass if over 3" height)
- Use integrated pest management (IPM) techniques to reduce use of pesticides and herbicides

Reconstruction

- Reconstruct the vegetated swale if no longer functioning properly

Inspection Signature

2019

By signing this document, I confirm that this stormwater quality BMP has been inspected and documented following the guidelines recommended on this self inspection form, and is in full and effective operating condition to the best of my knowledge.

Inspection Signature _____ Date _____